

X360dock Module 1 Installation Guide

For hardware version 1.0 (Slim)

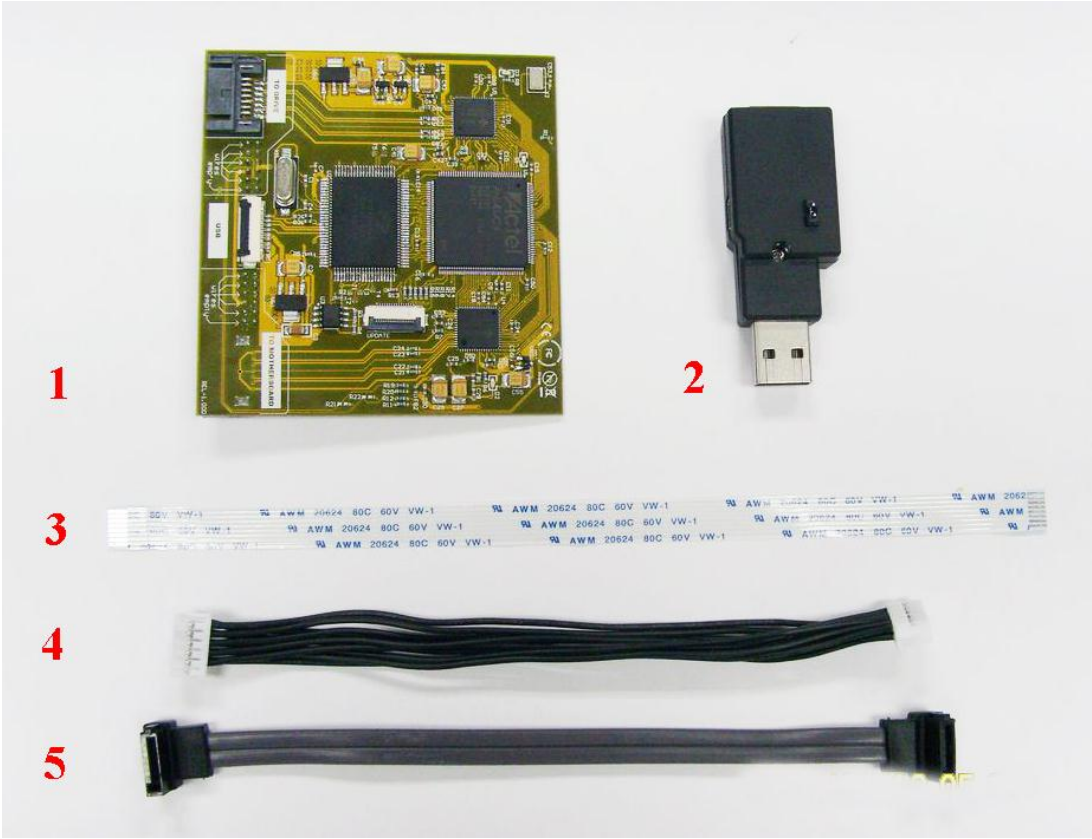
Introduction

This document will teach you how to install the X360dock drive emulator for Xbox360 Slim step by step, please follow the steps below and be careful during the installation process.

In order to put the X360dock inside the Xbox360 Slim, you need to disassemble your Xbox360 console first. There are many videos online can tell you how to open the xbox360 Slim, just follow those video guides, you can do it easily. After you disassemble your Xbox360, your console will look like the picture below.

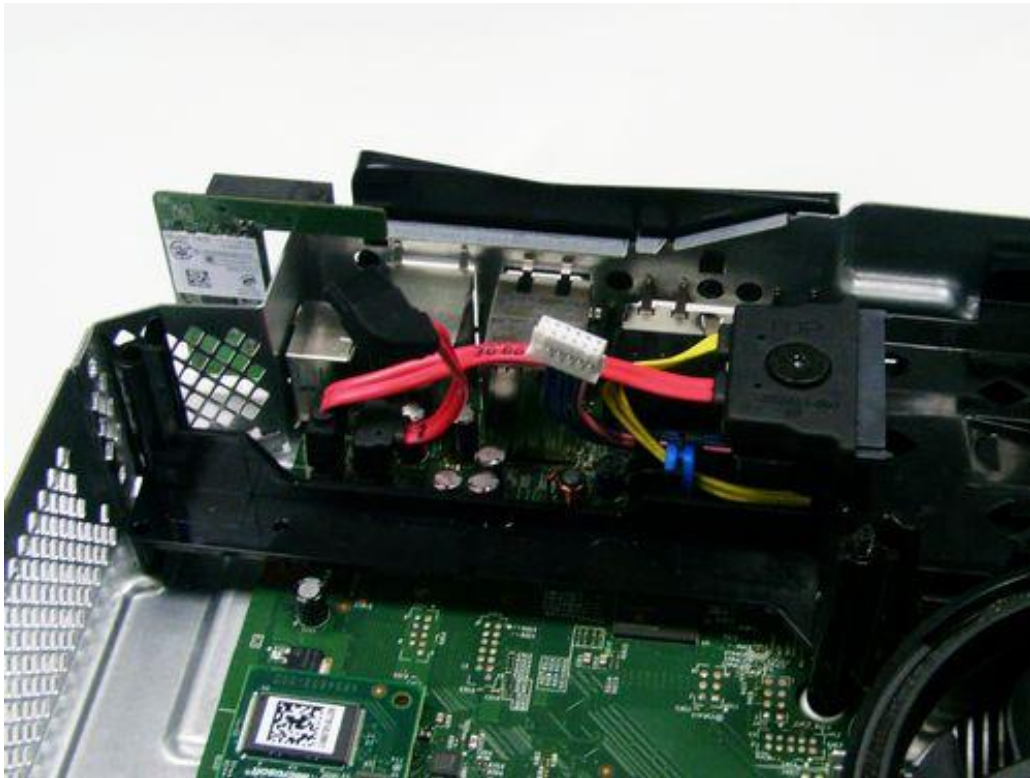


Contents of your X360dock

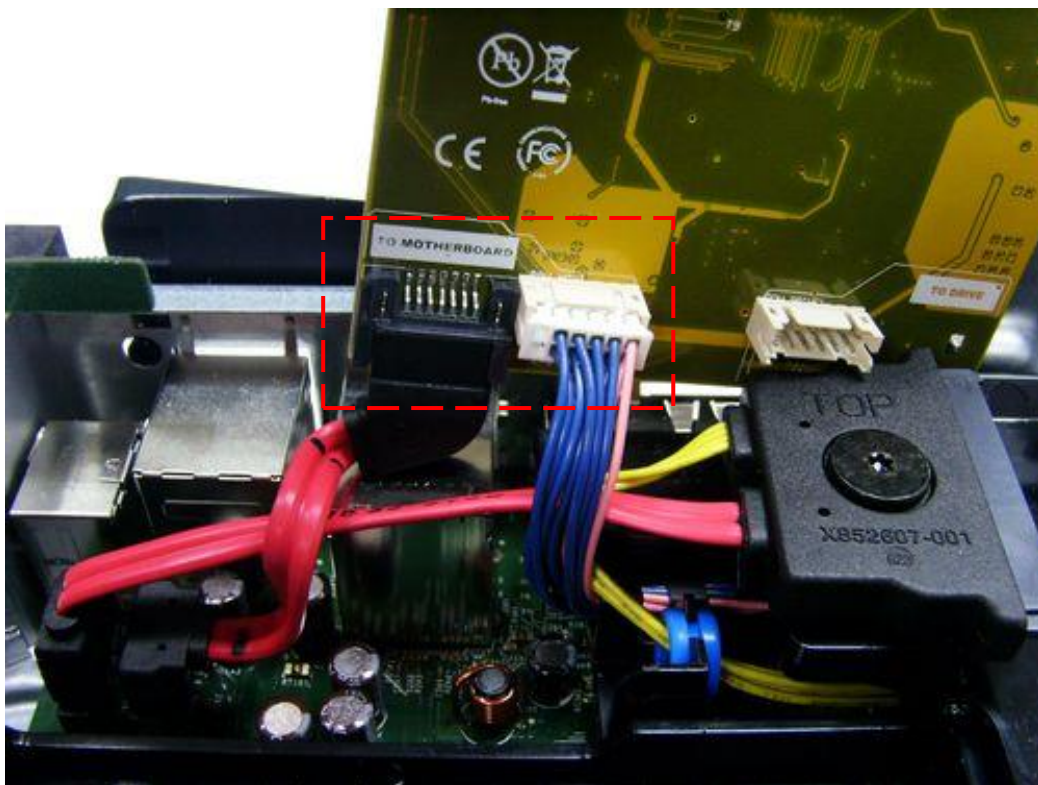


- 1. X360dock PCBA
- 2. USB Dongle
- 3. Flexible Flat Cable
- 4. Power Cable
- 5. SATA Cable

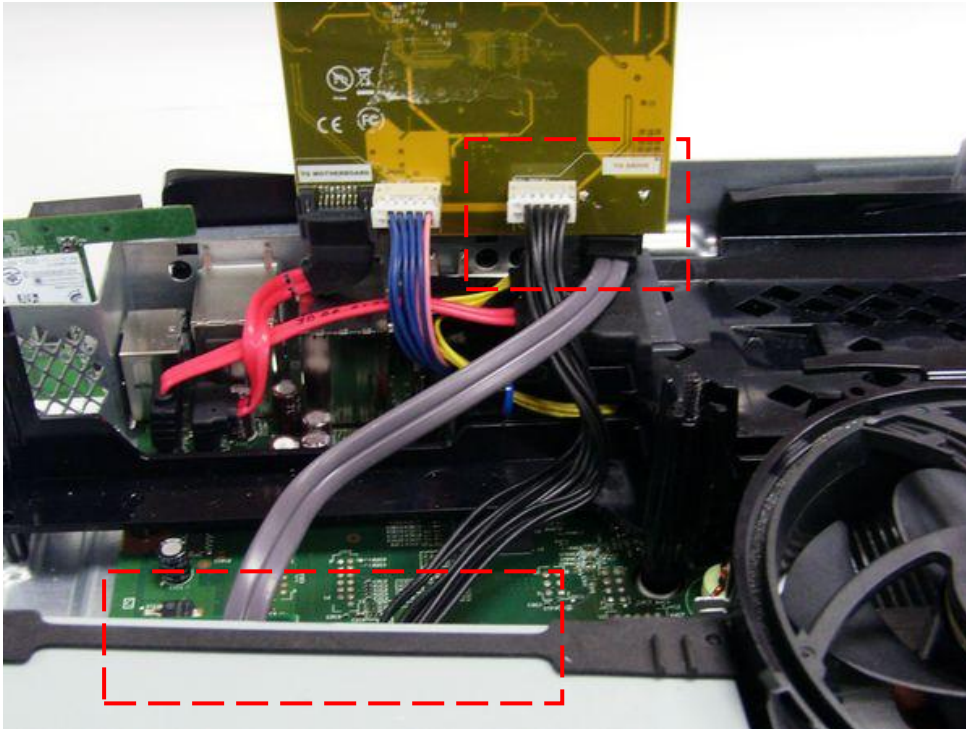
1. Unplug the SATA and power cables from the DVD drive and take out the drive from Xbox360.



2. Connect SATA/power cables in the "TO MOTHERBOARD" X360dock connector.



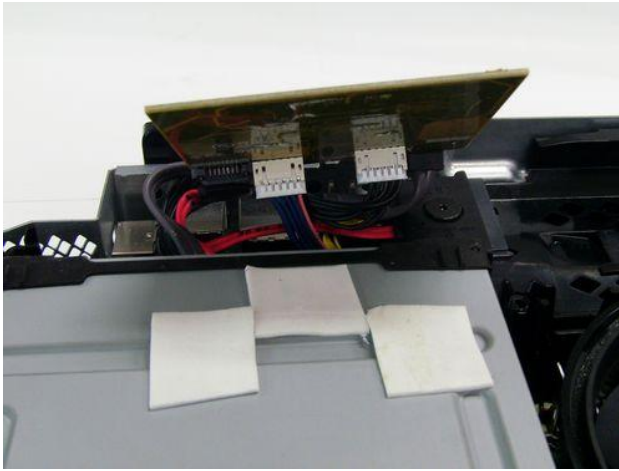
3. Connect our extra SATA/power cables which comes from “TO DRIVE” connector to your XBOX360 DVD drive.



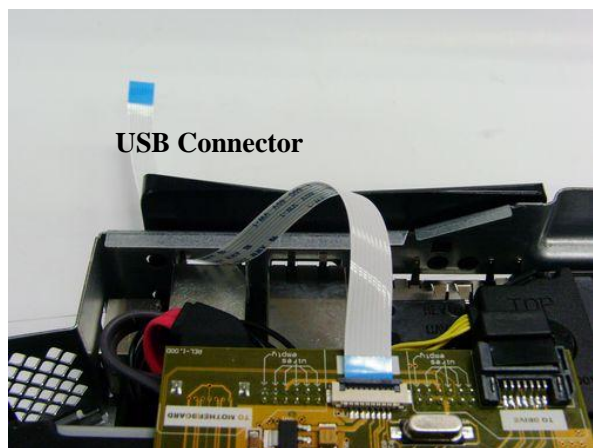
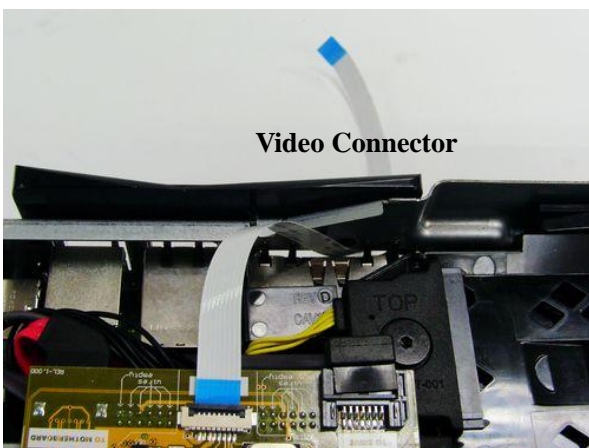
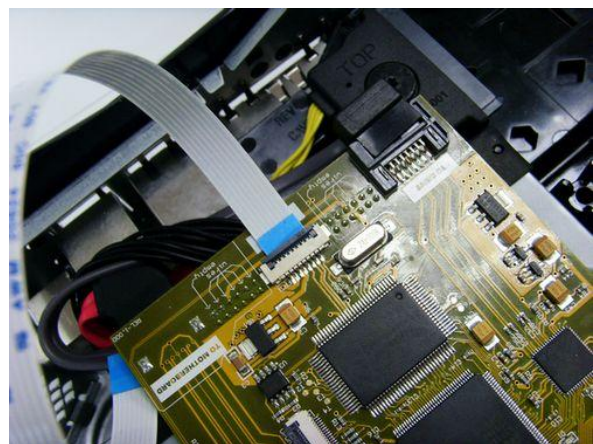
4. Place the DVD drive inside the Xbox360 and put those cables at the free space to make them fit comfortably, be careful, do not blend them too much and avoid breaking them internally.



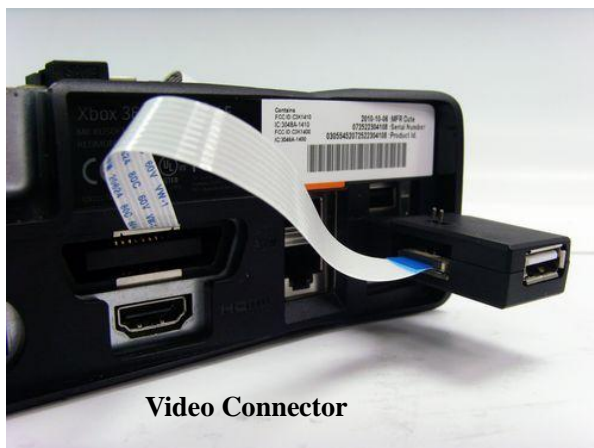
5. Set small pieces of double faced adhesive tape in the DVD drive and put the X360dock's PCBA on the DVD drive.



6. Move down the small video connector or USB connector flaps using some tweezers, open the X360dock USB connector, plug our Flexible Flat Cable (you must see the small blue side part), close the connector and send out the flat cable through the video connector OR USB connector.

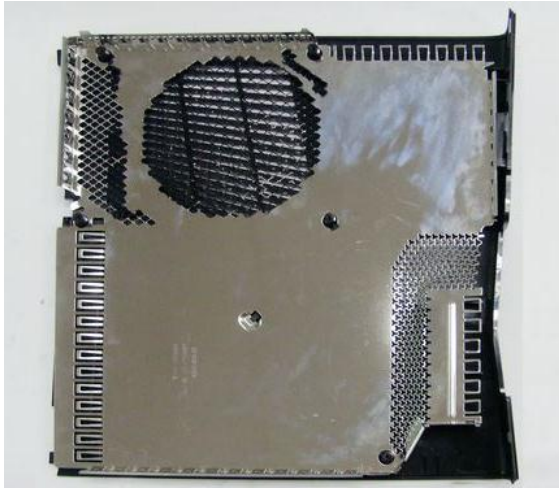


7. Open the flap of dongle, link the another flat cable blue part side and close carefully the flap (double check it's really closed), finally plug the dongle in your Xbox360 USB connector.

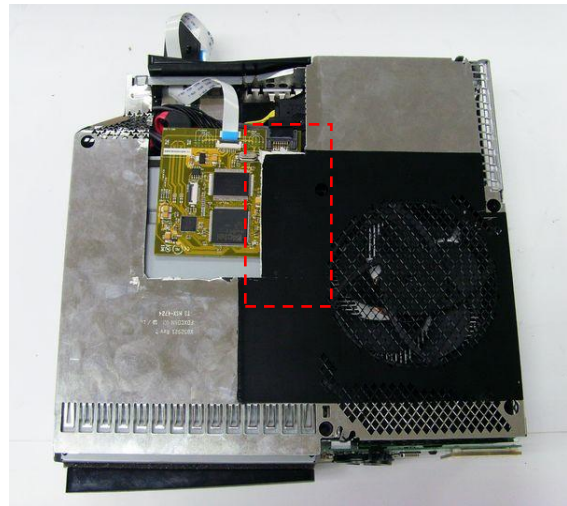
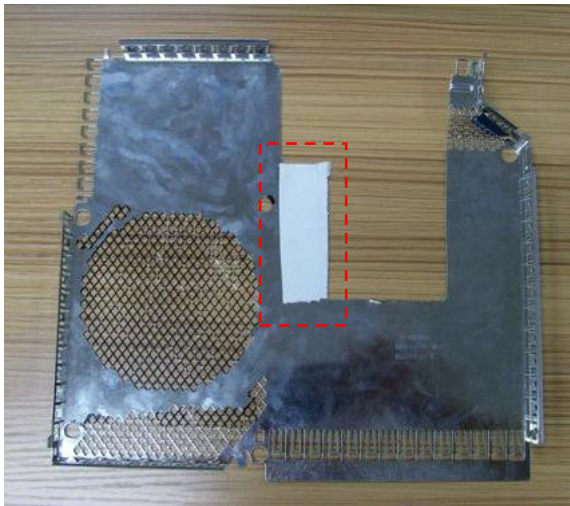


8. Don't close your covers yet, check all the cables and make sure they are correctly connected. Power on Xbox360, video (move up the Flat Cable to plug it properly), connect the Mini USB cable to PC, then test whether the X360dock is correctly working in Xbox360 (X360dock PC Software User Guide).

9. Once you've checked the X360dock working, now, it is time to reassemble your Xbox Slim, you may refer to one of the Xbox360 Slim reassembly guides online if you need. Because the space between DVD drive and cover plate is narrow, you need to **cut OR remove** the metal plate on the top cover plate. If you choose to cut the metal plate, the insulation tape should be pasted on the metal plate to avoid any shortcircuit. It's **HIGHLY RECOMMENDED** remove the top cover plate in SLIM consoles to avoid any shortcircuit and extra heat.



Remove the metal plate



Cut the metal plate and paste insulation tape



Reassemble Xbox360 Slim

10. And there you have it, your Xbox360 Slim equipped with X360dock! Enjoy!!!



X360dock